



by Fortis

MARMONT



Renders

**Fortis
Development
Group**

















Location

Floor Plans

Details

Finishes & Plants



Location

Floor Plans

Details

Finishes & Plants







MARMONT

Location

Floor Plans

Details

Finishes & Plants

Location



**Fortis
Development
Group**



MARMONT

Location



**Fortis
Development
Group**

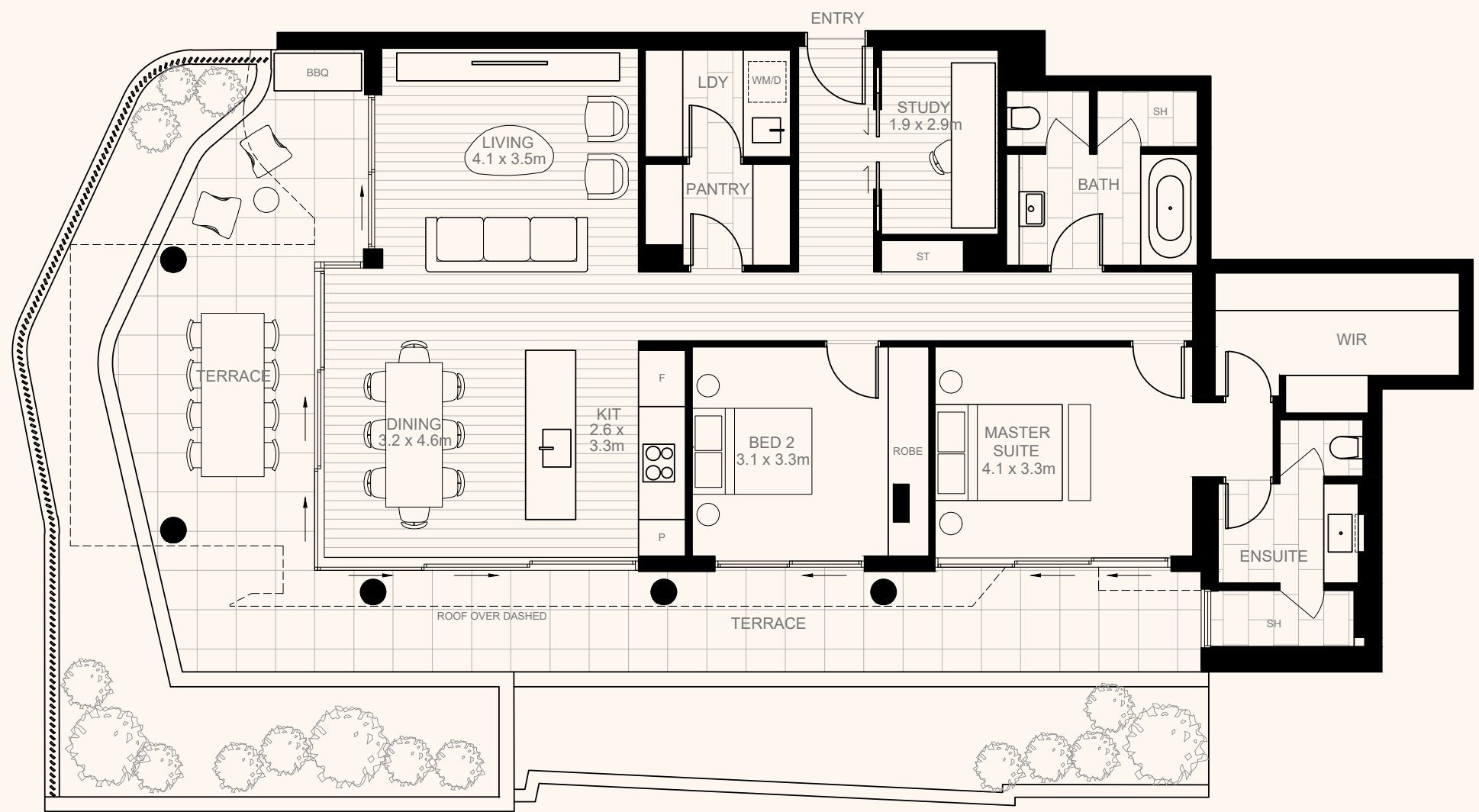
Floor Plans

Details

Finishes & Plants

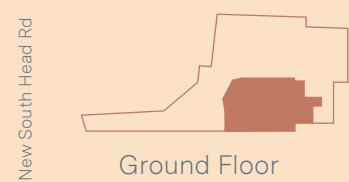


Ground Floor — Residence 01



Fortis Development Group
fortis.com.au/marmont

Disclaimer: These plans are intended as a guide only. The dimensions and areas are approximate only and may not accurately represent the actual dimensions and areas of the residences/car spaces or the spaces within them and are subject to change without notice. In addition, locations of utilities may vary during construction and fittings and fixtures on these plans are for illustrative purposes only. Prospective purchasers must rely on their own enquiries and should refer to the Contract of Sale and its schedules for all matters to be included in the purchase price of the residences, including plans, finishes, fixtures, fittings, appliances and other particulars of sale.



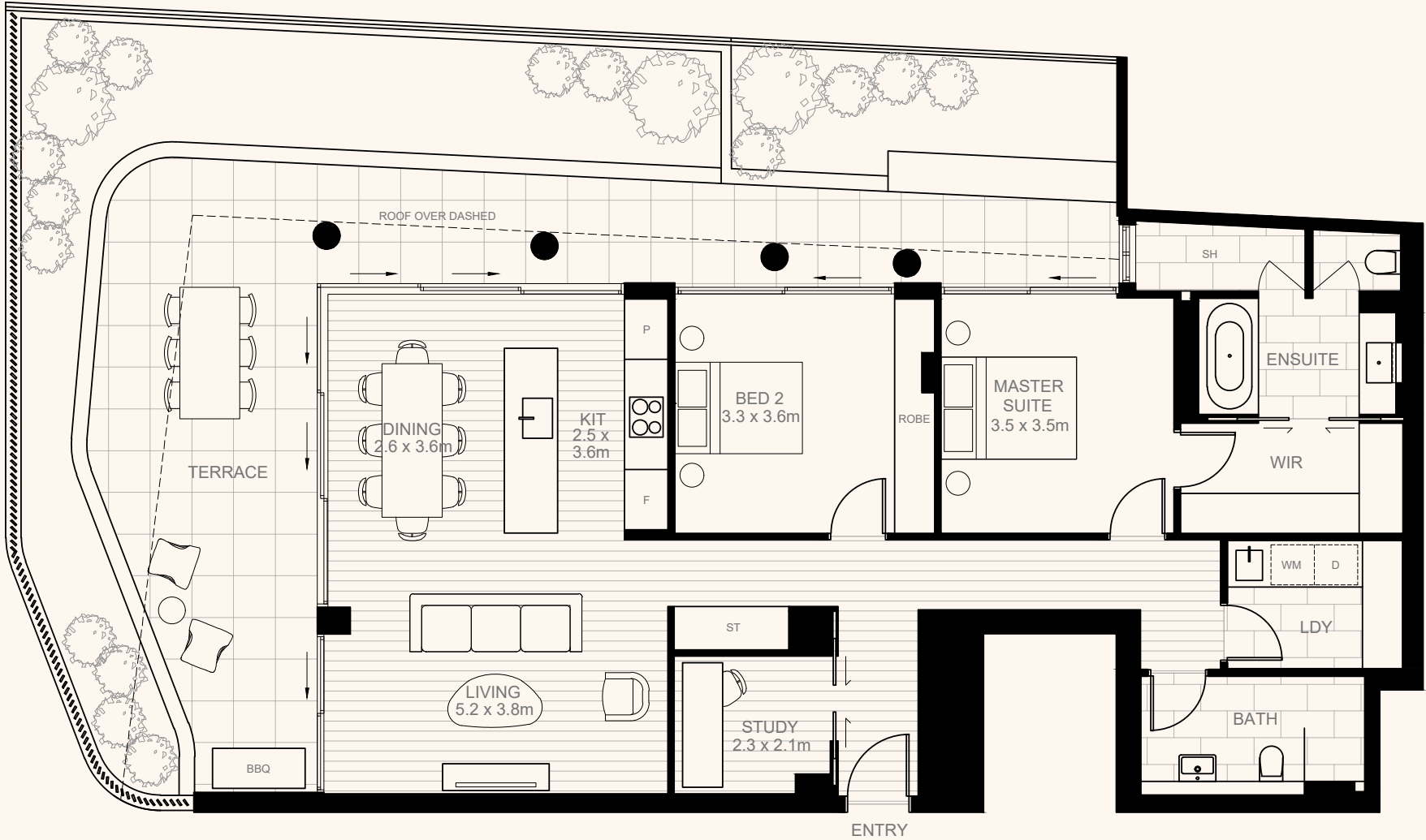
2 Bedrooms 2 Bathrooms 2 Carparks

123m² Residence
97m² Terrace
6m² Storage
226m² Total





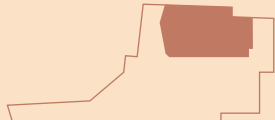
Ground Floor — Residence 02



**Fortis
Development
Group**
fortis.com.au/marmont

Disclaimer: These plans are intended as a guide only. The dimensions and areas are approximate only and may not accurately represent the actual dimensions and areas of the residences/car spaces or the spaces within them and are subject to change without notice. In addition, locations of utilities may vary during construction and fittings and fixtures on these plans are for illustrative purposes only. Prospective purchasers must rely on their own enquiries and should refer to the Contract of Sale and its schedules for all matters to be included in the purchase price of the residences, including plans, finishes, fixtures, fittings, appliances and other particulars of sale.

New South Head Rd



Ground Floor

2

Bedrooms

2

Bathrooms

2

Carparks

114m² Residence
91m² Terrace
4m² Storage
209m² Total



Details

Finishes & Plants



First Floor — Residence 03

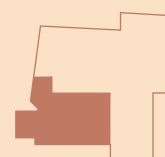


**Fortis
Development
Group**

fortis.com.au/marmont

Disclaimer: These plans are intended as a guide only. The dimensions and areas are approximate only and may not accurately represent the actual dimensions and areas of the residences/car spaces or the spaces within them and are subject to change without notice. In addition, locations of utilities may vary during construction and fittings and fixtures on these plans are for illustrative purposes only. Prospective purchasers must rely on their own enquiries and should refer to the Contract of Sale and its schedules for all matters to be included in the purchase price of the residences, including plans, finishes, fixtures, fittings, appliances and other particulars of sale.

New South Head Rd



First Floor

2

Bedrooms

2

Bathrooms

2

Carparks

109m²
21m²
4m²

134m²

Residence
Terrace
Storage

Total



MARMONT

Details

Finishes & Plants



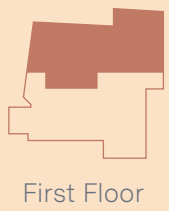
First Floor — Residence 04



Fortis Development Group
fortis.com.au/marmont

Disclaimer: These plans are intended as a guide only. The dimensions and areas are approximate only and may not accurately represent the actual dimensions and areas of the residences/car spaces or the spaces within them and are subject to change without notice. In addition, locations of utilities may vary during construction and fittings and fixtures on these plans are for illustrative purposes only. Prospective purchasers must rely on their own enquiries and should refer to the Contract of Sale and its schedules for all matters to be included in the purchase price of the residences, including plans, finishes, fixtures, fittings, appliances and other particulars of sale.

New South Head Rd



First Floor

3 Bedrooms 2.5 Bathrooms 2 Carparks

165m² Residence
45m² Terrace
5m² Storage
215m² Total





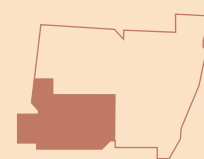
Second Floor — Residence 05



**Fortis
Development
Group**
fortis.com.au/marmont

Disclaimer: These plans are intended as a guide only. The dimensions and areas are approximate only and may not accurately represent the actual dimensions and areas of the residences/car spaces or the spaces within them and are subject to change without notice. In addition, locations of utilities may vary during construction and fittings and fixtures on these plans are for illustrative purposes only. Prospective purchasers must rely on their own enquiries and should refer to the Contract of Sale and its schedules for all matters to be included in the purchase price of the residences, including plans, finishes, fixtures, fittings, appliances and other particulars of sale.

New South Head Rd



Second Floor

2 2 2
Bedrooms Bathrooms Carparks

109m² Residence
21m² Terrace
4m² Storage
134m² Total

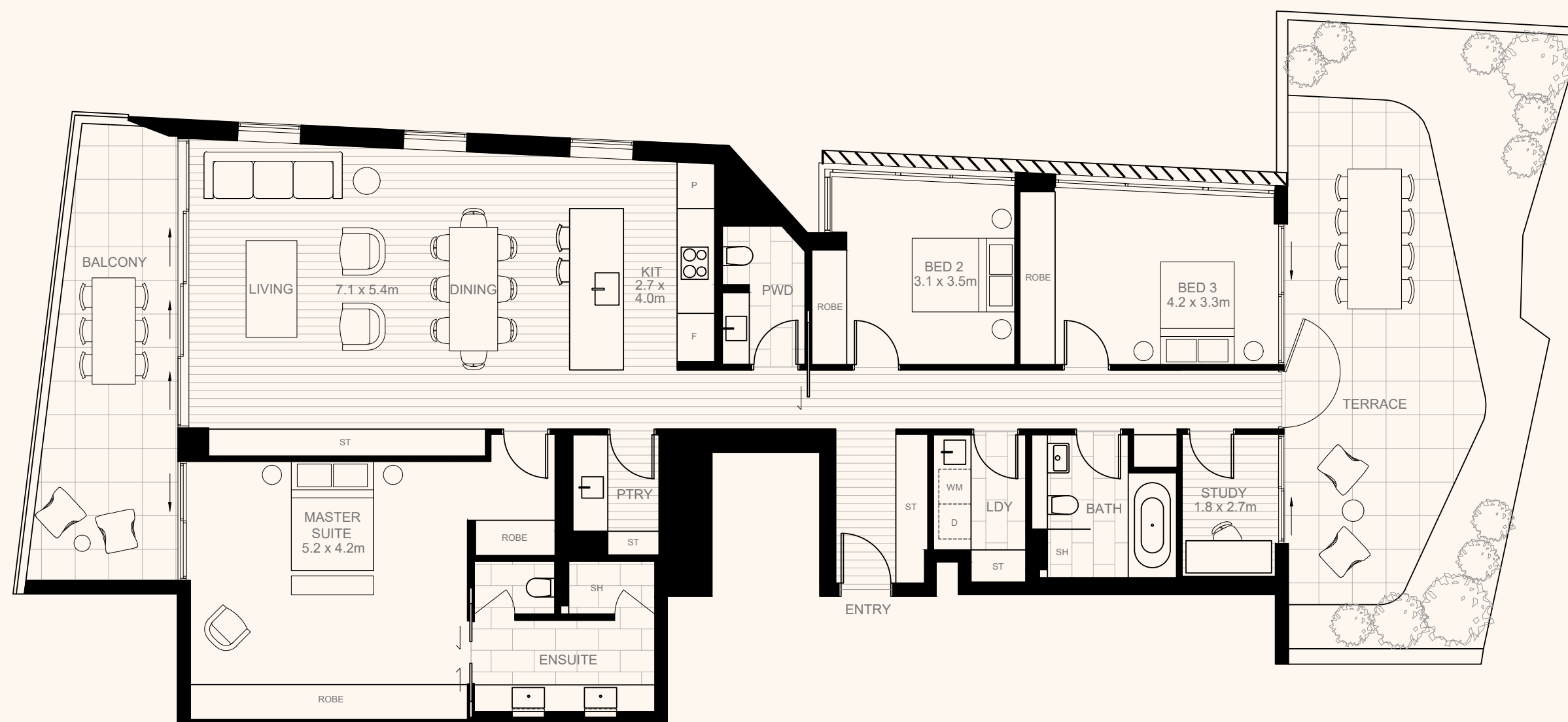


Details

Finishes & Plants



Second Floor — Residence 06

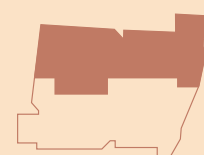


**Fortis
Development
Group**

fortis.com.au/marmont

Disclaimer: These plans are intended as a guide only. The dimensions and areas are approximate only and may not accurately represent the actual dimensions and areas of the residences/car spaces or the spaces within them and are subject to change without notice. In addition, locations of utilities may vary during construction and fittings and fixtures on these plans are for illustrative purposes only. Prospective purchasers must rely on their own enquiries and should refer to the Contract of Sale and its schedules for all matters to be included in the purchase price of the residences, including plans, finishes, fixtures, fittings, appliances and other particulars of sale.

New South Head Rd



Second Floor

3 Bedrooms
2.5 Bathrooms
2 Carparks

165m² Residence
52m² Terrace
4m² Storage
221m² Total

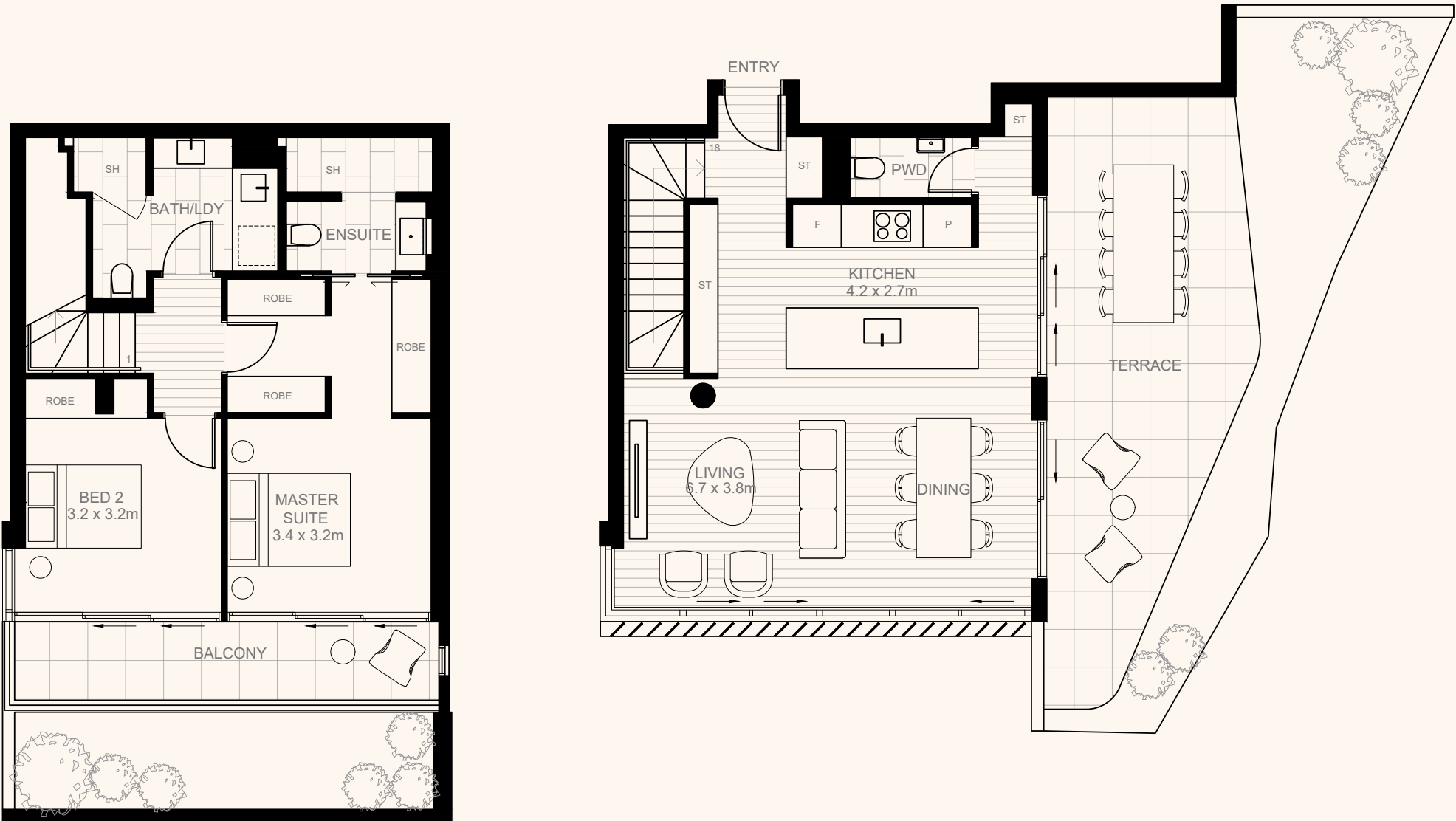


Details

Finishes & Plants

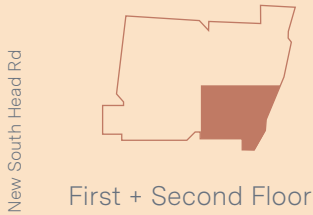


First + Second Floor — Residence 07



Fortis Development Group
fortis.com.au/marmont

Disclaimer: These plans are intended as a guide only. The dimensions and areas are approximate only and may not accurately represent the actual dimensions and areas of the residences/car spaces or the spaces within them and are subject to change without notice. In addition, locations of utilities may vary during construction and fittings and fixtures on these plans are for illustrative purposes only. Prospective purchasers must rely on their own enquiries and should refer to the Contract of Sale and its schedules for all matters to be included in the purchase price of the residences, including plans, finishes, fixtures, fittings, appliances and other particulars of sale.



2	2.5	2	100m ²	Residence
			67m ²	Terrace
			4m ²	Storage
			171m ²	Total





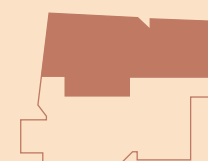
Third Floor — Residence 08



Fortis Development Group
fortis.com.au/marmont

Disclaimer: These plans are intended as a guide only. The dimensions and areas are approximate only and may not accurately represent the actual dimensions and areas of the residences/car spaces or the spaces within them and are subject to change without notice. In addition, locations of utilities may vary during construction and fittings and fixtures on these plans are for illustrative purposes only. Prospective purchasers must rely on their own enquiries and should refer to the Contract of Sale and its schedules for all matters to be included in the purchase price of the residences, including plans, finishes, fixtures, fittings, appliances and other particulars of sale.

New South Head Rd



Third Floor

3 Bedrooms 2.5 Bathrooms 2 Carparks

165m² Residence
19m² Terrace
8m² Storage
192m² Total



Details

Finishes & Plants



Third Floor — Residence 09



**Fortis
Development
Group**

fortis.com.au/marmont

Disclaimer: These plans are intended as a guide only. The dimensions and areas are approximate only and may not accurately represent the actual dimensions and areas of the residences/car spaces or the spaces within them and are subject to change without notice. In addition, locations of utilities may vary during construction and fittings and fixtures on these plans are for illustrative purposes only. Prospective purchasers must rely on their own enquiries and should refer to the Contract of Sale and its schedules for all matters to be included in the purchase price of the residences, including plans, finishes, fixtures, fittings, appliances and other particulars of sale.

New South Head Rd



Third Floor

3	2.5	2
Bedrooms	Bathrooms	Carparks

162m ²	Residence
21m ²	Terrace
7m ²	Storage
190m²	Total



Details

Finishes & Plants

MARMONT

Details



**Fortis
Development
Group**

Details

Finishes & Plants



- 1 Low sheen acrylic paint
Internal walls
- 2 Engineered timber floorboards
General flooring
- 3 Porcelain tile
Balcony floor
- 4 Engineered timber feature
Living room joinery



- 1 Natural stone
Bathroom benchtop
- 2 Natural stone tile
Bathroom wall and floors
- 3 Engineered timber feature
Ensuite joinery
- 4 Dark bronze framed mirror
Concealed shaving cabinet
- 5 Flat acrylic paint
Ceilings
- 6 Matte gunmetal
Tapware



1



2



3



4



5



6

- 1 Fisher and Paykel Fridge
- 2 Miele Dishwasher
- 3 Miele Oven
- 4 Miele Cooktop
- 5 Miele Rangehood
- 6 Miele Dryer

MARMONT

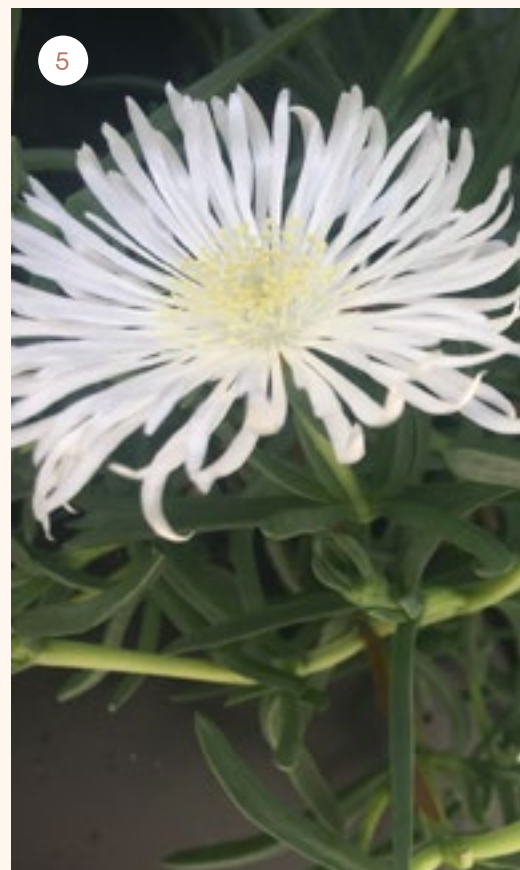
Finishes & Plants



**Fortis
Development
Group**



- 1 **Natural stone**
Living room joinery & bathrooms
- 2 **Engineered timber feature**
Joinery elements (excluding living room)
- 3 **Natural stone**
Kitchen benchtops and select bathrooms
- 4 **Engineered timber floorboards**
General flooring
- 5 **100% wool carpet**
Bedrooms
- 6 **Porcelain tile**
Balcony and terrace areas



- 1 Exmouth Bull Bay Magnolia flower
- 2 Convolvulus groundcover
- 3 Aloe Big Red succulent
- 4 Viburnum shrubs
- 5 Mesembryanthemum 'White Lashes' flower
- 6 Ligularia shrubs

